

TBLI BETTER WORLD PRIZE

People's Choice Award for Best ESG Measurement System



TBLI Better World Prize

People's Choice Award for Best ESG/Impact Measurement System

ESG and impact have become mainstream. It seems that every day there's a new ESG reporting standard or organization. Do we need so many? Which ones are actually useful? How can we know?

TBLI are all about bringing clarity and transparency to this confused mess.

"TBLI Better World Prize" will cut through the marketing and public relations noise to identify the measurement systems that ESG/Impact industry professionals believe are the most valid and useful.

[More Info](#)

[Apply Now](#)

Why Better World Prize

ESG and impact have become mainstream. It seems that every day there's a new ESG reporting standard or organization. Do we need so many? Which ones are actually useful? How can we know?

TBLI are all about bringing clarity and transparency to this confused mess.

The TBLI Better World Prize" will cut through the marketing and public relations noise to identify the measurement systems that ESG/Impact industry professionals believe are the most valid and useful."

Reasoning

The world is running out of runway to address our social and environmental challenges, i.e. Climate Change, Water Stress, Food Security, and Poverty to name a few. These problems are accelerating. At the same time, there is 4.4x more wealth than GDP, according to Credit Suisse Wealth Report. What if we mobilized that money to address our social and environmental challenges as well as achieve market rate return, if possible.

To do that we need to know if our investments will truly improve society or the environment. Present ESG and Impact Measurement doesn't provide that insight. Present measurement is more risk focussed rather than output.

TBLI Better World Prize was established to improve ESG and Impact analysts by highlighting the best and worst and offer true comparability. Ultimate goal speed up investment into societal and environmental restoration

Background

TBLI Group:

25 year experience in this field

40 international summits on ESG and Impact Investing (EMEA/APAC/NALA)

Over 10.000 attendees

Largest network of ESG and Impact Investors, Entrepreneurs & Thought leaders

Experience in virtual and face to face event

ICT infrastructure in place (marketing, research, payment processing)

State of the art CRM

Virtual events platform (Run The World)

Weekly digital Publication going to 45000 readers

TBLI has the largest network of ESG and Impact thought leaders, practitioners, asset owners, service providers and managers

Recently a mapping of the leading frameworks, research providers, indexes, was created as a basis.

This database will be further expanded to include many of the leading organizations in analyzing sustainable performance.

The questions posed to each participant would be posed at the event. However, it might be helpful to give clear instructions to those invited to participate as to what they will be asked to allow them to prepare.

Challenge

Present system of ESG analysis and rating not achieving original goals of restoring the social and environmental balance

Claims of +40 trillion dollars committed and growing significantly.

Environmental and social challenges not addressed.

- Climate change
- Biodiversity loss
- Water Shortage
- Food shortage
- Health Crisis (Diabetes)
- Income Inequality (Living Wage)
- Pollution

Is there a more accurate way of measuring ESG of corporates and investments?

Why is ESG not delivering

Greenwashing?

Is the invested (or committed) capital inadequate for the scale of the problem?

Is the definition of ESG incorrect / misaligned among the stakeholders?

Do we need a better or more robust way of measuring the ESG performance of companies which would help promote more accountability within the financial sector?

Purpose of Award

The purpose is not to set a new standard.

Use the Wisdom of the Crowd, (large or diverse pool of participants) to find best way of measuring sustainability.

Provide transparency and comparability of all the different measurement systems and frameworks. This opportunity has not been provided until now. It has been avoided.

Training & Education: Having a library of all the leading ESG and Impact measurement systems and frameworks will be an excellent tool, that can be used frequently.

Business schools, service providers, asset owners, asset managers will be able to simply compare the various models 24/7

Intention is to launch the awards this year and it should be global in scope.

Partnerships would be intended to be long term.

First year, no sponsorship would be sought.

After successfully launching, sponsorship for future years would be far easier, and allow compensation for all those participating.

Ultimate aim is to create a more effective way of measuring the sustainable performance of companies and investment vehicles.

Logistical Information:

- **A fully independent and unbiased jury will be overseeing the process**
- **TBLI will host and organize the event live and present your presentation recording or you may present live, via our online event system**
- **Parallel to this there will be a platform created showing all the presentations with a voting system in place.**
- **Everyone will be able to view all the presentations at their leisure and including a one-vote system per candidate, ranging from 1 to 10.**
- **Each 5 min. presentation will be placed in the voting system with their logo and a choice of 1-10 which would represent their grade.**
- **The Voting system will remain available open source for a long period of time allowing everyone to take their time to review each presentation.**

The various events will be virtual with some thought leadership discussions or presentations included

Instructions for Presenters

Here's how it works.

- **5 minutes. That's all the time you get to convince the jury of why your measuring system is the best.**
- **Record & send a 5-minute video** presentation outlining your measurement system & why it is the best
- You will need to answer *each* of the questions below.
- You are free to use whichever software you wish for the presentation recording. (We recommend a narrated slideshow through Powerpoint)
- We will not accept any presentations that are over 5 minutes.

Here are the questions:

1. How do you capture the governance performance of companies?
2. What is your source of environmental performance indicators?
3. How are you analysing the social impact of each company?
4. How are you measuring the culture of the companies you work with?
5. How are you discovering the operating values of companies?
6. How do you ensure that what you measure or report is correct (i.e. within 5%)?
7. Do you supplement the measured data in any way?
8. Who uses your products and why do they use them?
9. Please advise the number of individuals using your products / services?

Solutions

TBLI will be launching the The TBLI Better World Prize for all sustainable measurement systems, ESG rating systems, Frameworks and Standards.

This will be an annual award with a fully independent and unbiased jury overseeing the process.

Each ESG related organization (nominee), in various categories (framework, standards, measurement, and ratings) profit or non-profit will be invited to address the questions posed by the jury and convince the viewing audience in a 5 Minute presentation.

Following each 5 minute round the audience will be polled and winners will be announced.

TBLI will host and organize this via their online events system and provide an annual summary document.

Parallel to this there will be a platform created showing all the presentations with a voting system in place to allow everyone to view all the presentations at their leisure and including a one-vote system per candidate, ranging from 1 to 10.

Each 5 min. presentation will be placed in the voting system with their logo and a choice of 1-10 which would represent the ranking

The Voting system will remain available open source for a long period of time allowing everyone to take their time to review each presentation.

Each voter may edit or change their vote prior to submitting as the number allowing for maximum time to vote and reflect.

Online Research and Voting System



What score would you give the measurement systems below based upon the jury's questions?

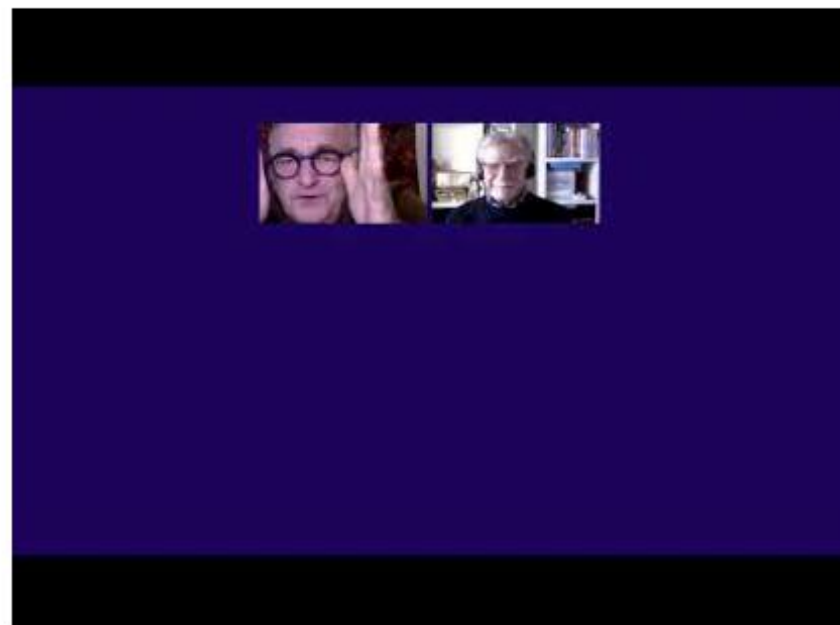
Form description

Email *

Valid email

This form is collecting emails. [Change settings](#)

Barrett Value



Barrett Value *



1. 1

2. 2

3. 3

4. 4

5. 5

6. 6

7. 7

8. 8

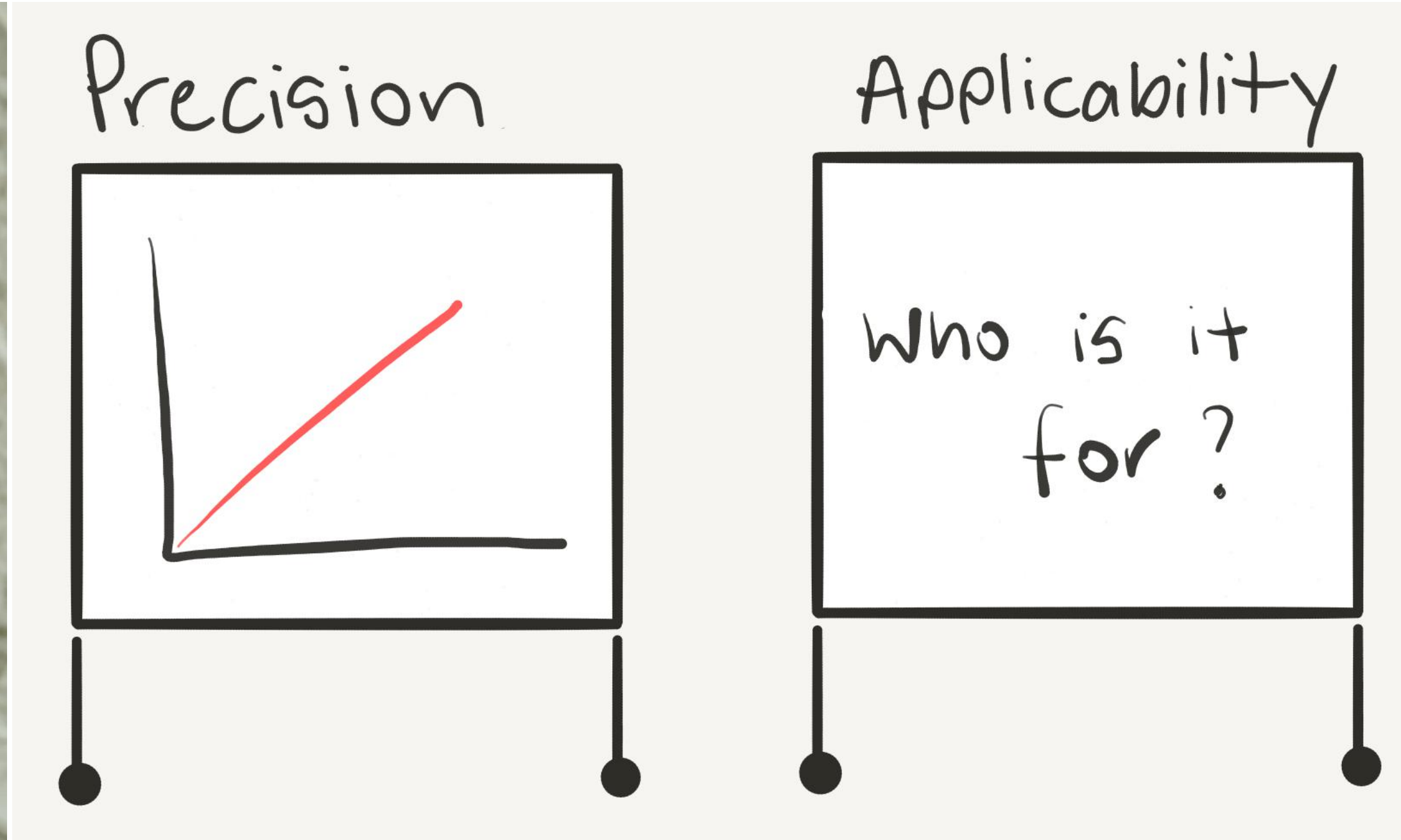
9. 9

10. 10

What should ESG provide?



Accuracy



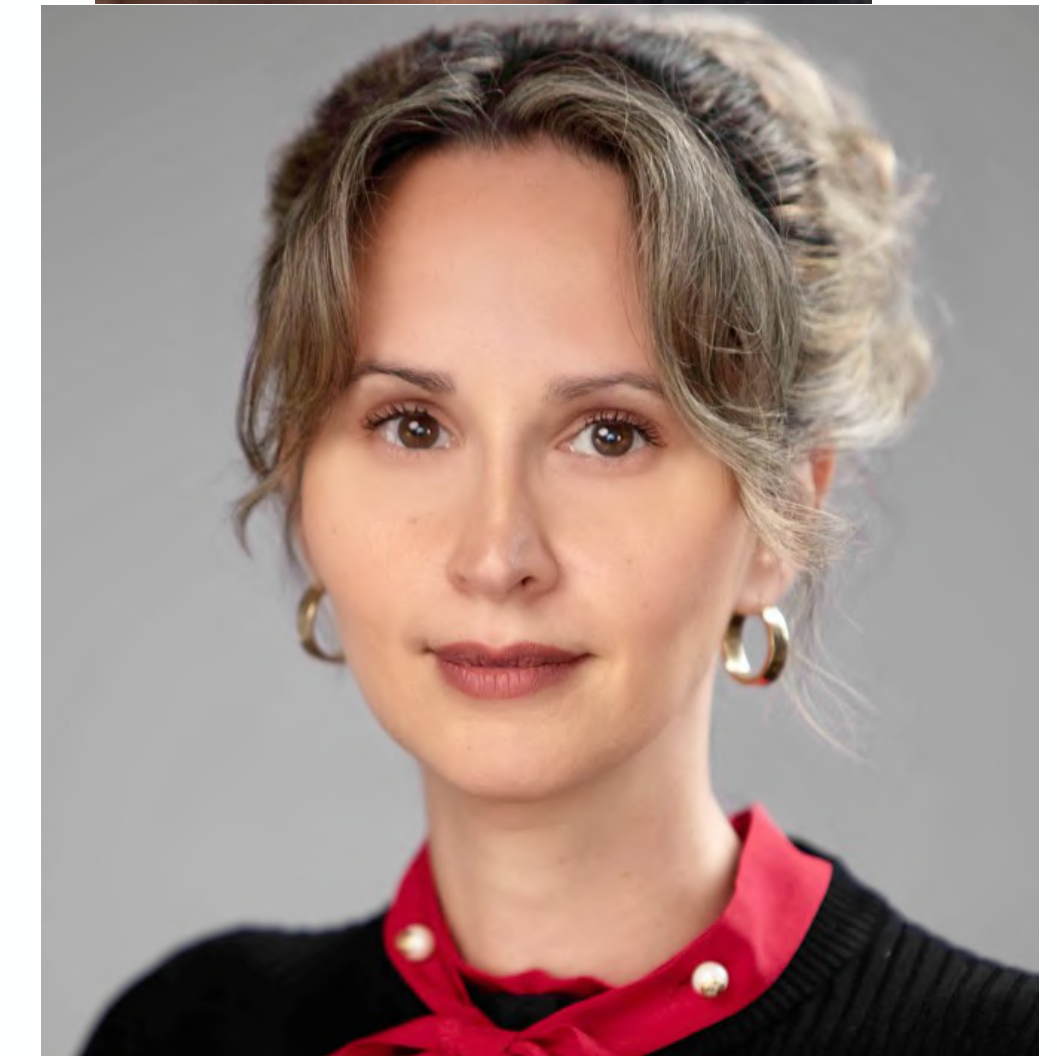
Applicability



Traceability

Advisory Panel

The advisory panel will be made up of a broad range of experts (Academic, Practitioners, Asset Managers, Asset Owners) that will not vote but ask the critical questions that each presenter needs to address.



THANK YOU